



Australian Government

TCSI TERTIARY COLLECTION
OF STUDENT INFORMATION

TCSI Provider November Webinar

Wednesday 27 Nov 2024

Agenda

All providers:

- TCSI Renewal update – TCSI Analytics Portal Uplift

Higher Education providers:

- Ministerial Notice - HEP Provider 2025 reporting requirement
- TCSI Renewal update – Introducing the Critical Loan Error Dashboard
- First address reporting
- Data reporting for FEE-FREE Uni Ready Courses
- 2025 Apps and Offers collection

All provider update

VET

HEP

PIR

TCSI Renewal update – TCSI Analytics Portal Uplift Iteration 1

VET

HEP

PIR

We are thrilled to announce a refreshed design for the TCSI Analytics Portal. This update stems from valuable feedback received during provider engagement sessions earlier this year.

The uplift aims to enhance user experience with improved navigation, navigation, streamlined report categorization, and new portal pages designed to facilitate easier access to key information. We're excited We're excited to share some of these new features with you.



Key improvements and launch timeline

- 1 Improved navigation**

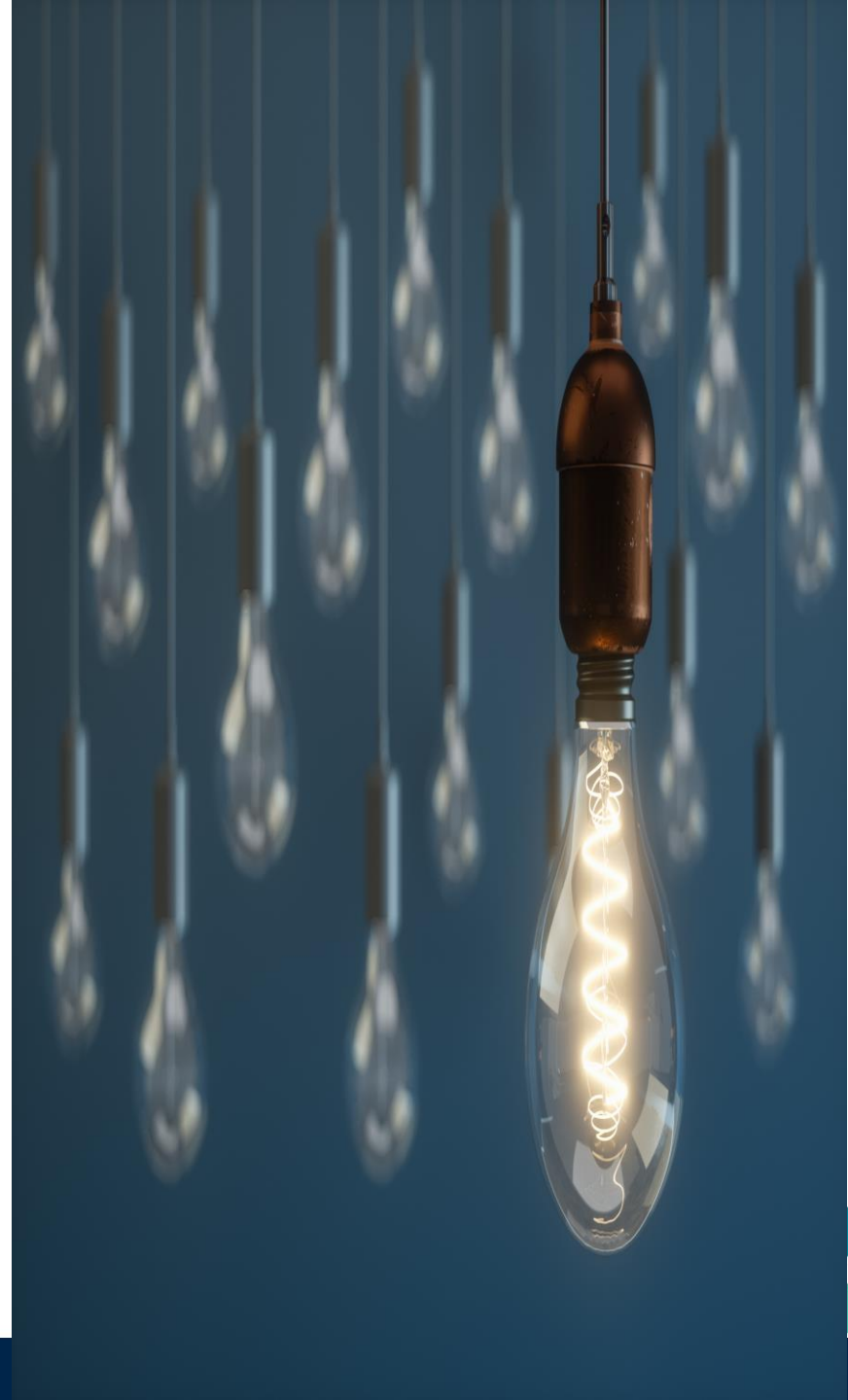
The new design features an intuitive menu structure.

This allows users to find reports and data more efficiently.
- 2 Streamlined report categorization**

Reports are now organized into clear, logical categories. This makes it easier to locate specific information quickly.
- 3 New portal pages**

We've added dedicated pages for key information.

These pages provide quick access to essential data and insights.
- 4 Launch: 29 November 2024**





Australian Government

TCSI Analytics

Your tool for accessing and verifying data

TCSI: [Support](#)

[Access](#)

UAT Account1 ▾

Logged in as Provider Code:

[Home](#)

[Live Reports](#)

[Verified Reports](#)

[Dashboards](#)

[Verifications](#)

[Resources](#)

All Reports

A-Z list of all reports contained within TCSI Analytics.

New Pages

Filters

Updated Banner

Provider type

Report type

📌 My Reports

You don't have any pinned reports.
Click the pin icon to add a report

Type ^

Pin

Report ↕

Support

Provider Dashboard → [Critical Loan Transfer Errors Provider Dashboard](#)

Provider Dashboard [Provider Critical Loan Transfer Errors \(SV\) Dashboard](#)

Provider Dashboard [Expected Trends Provider Dashboard](#)

Verification Report [Course Completions \(All Students\) Verification](#)

Verification Report [Course Completions \(HDR Students\) Verification](#)

Verification Report [Course Completions \(Indigenous Students\) Verification](#)

Verification Report [Course Completions \(Special Course\) Verification](#)

Verification Report [EFTSL Verification](#)

Saving favourite reports
All reports available



Live Reports

Reports using real-time data, generally presented in a summarised format.

All Reports

[Access all reports](#)

My Live Reports

You don't have any pinned reports.
Click the pin icon to add a report

Updated Categorization

Student

Summary

Unit Enrolments

[EFTSL Live Data](#)

This report provides a summary and comparisons of Equivalent Full-Time Student Load (EFTSL).

[Find out more](#)

[HDR EFTSL Live Data](#)

This report provides a summary of Equivalent full-time student load for students enrolled in Higher Degree Research (HDR) courses for a selected year.

[Find out more](#)

[Student Load Liability Distribution Live Data](#)

This report provides a summary and comparisons of the distribution of the Equivalent Full-Time Student Load (EFTSL) of units reported for the current year and the previous year.

[Find out more](#)

[Unit of Study Completions Live Data](#)

This report provides a summary and comparisons of the completion status for units of study that have been completed in the selected reporting year.

[Find out more](#)

Student Loans & Payments

[Adjusted HELP Live Data](#)

This report displays details of adjusted debts and loan fees for a given period.

[Find out more](#)

[CGS Clusters by Course Level Live Data](#)

This report displays Course Level details grouped by funding clusters.

[Find out more](#)

[FEE-HELP Live Data](#)

This report provides a distribution of FEE-HELP student loans for a selected year.

[Find out more](#)

[HECS-HELP Live Data](#)

This report provides a distribution of HECS-HELP student loans for a selected year.

[Find out more](#)

[HECS-HELP Payment Status Live Data](#)

This report provides a summary of HECS-HELP student loans for a selected year.

[Find out more](#)

[HELP Debts by Citizenships Live Data](#)

This report displays details of HELP loans reported for students

[Find out more](#)

[↑ Back to top](#)



Verified Reports

Displays the relevant national verified reports.

All Reports

[Access all reports](#)

My Verified Reports

You don't have any pinned reports.
Click the pin icon to add a report

Student

[Summary](#) ▾

Higher Education Staff

[Summary](#) ▾

OS-HELP

[Summary](#) ▾

SA-HELP

[Summary](#) ▾



Australian Government

TCSI Analytics

Your tool for accessing and verifying data

TCSI: [Support](#)

[Access](#)

UAT Account1 ▾

Logged in as Provider Code:

[Home](#)

[Live Reports](#)

[Verified Reports](#)

[Dashboards](#)

[Verifications](#)

[Resources](#)

Collection

HEP Commonwealth Scholarships

HEP OS-HELP

HEP SA-HELP

HEP Students



Resources

Explore key resources to support your data reporting and compliance in TCSI. Access guides, notices, and tools for streamlined processes.

1. Ministerial & Secretary's Notices

Access official notices on policy changes and compliance.

[View Notices](#)

2. Higher Education Student Reporting Requirements

Learn about event-based reporting and compliance with due dates.

[View Requirements](#)

3. Higher Education Data Verification

Ensure the accuracy of your submitted data.

[Verify Data](#)

4. Tax File Number (TFN) Verification

Verify student TFN efficiently.

[Verify TFN](#)

5. Unique Student Identifier (USI) Verification

Verify students' Unique Student Identifiers.

[Verify USI](#)

6. TCSI Real-Time Validations

View real-time validation checks for your data.

[View RTV topics](#)

7. TCSI Scheduled Validations (SV)

Learn about scheduled data validation process.

[View SV topics](#)

8. TCSI Data Element Dictionary

Access definitions and structures of key data elements.

[View Dictionary](#)

9. TCSI Tracker

Track status of TCSI and associated systems.

[Access Tracker](#)

10. TCSI New Starter Toolkit

Find resources for new users on the TCSI system.

[Explore Toolkit](#)



Australian Government

TCSI Analytics

Your tool for accessing and verifying data

TCSI: [Support](#) [Access](#)

UAT Account1 ▾

Logged in as Provider Code: .

[Home](#) [Live Reports](#) [Verified Reports](#) [Dashboards](#) [Verifications](#) [Resources](#)

Dashboards

Offering interactive visualisations and real-time insights, enabling you to enhance higher education data quality and make informed decisions.



Critical Loans Transfer Error Dashboard

The dashboard focuses on rectifying critical scheduled data errors affecting student loan transfers to the ATO and highlights seriously late reported loans that may impact student wellbeing.

Higher Education Provider (HEP) update

VET

HEP

PIR

Ministerial Notice - HEP Provider 2025 reporting requirement

VET

HEP

PIR

Ministerial Notice - HEP Provider 2025 reporting requirement

Ministerial Notice Circulation

- Email notification was sent to VCs and CEOs for HESA-approved providers on 25 November 2024
- Email was also sent to TCSI Newsletter subscribers from all HESA providers on 25 November 2024, including the submission deadline and Change Control document

Ministerial Notice - HEP Provider 2025 reporting requirement

HEP Student data

Higher education student reporting requirements **2025**

Select a year: 2025 ▼

All higher education providers ('providers') that are approved under the [Higher Education Support Act 2003](#) ¹² (HESA) are required to report data for the Higher

Courses of study group 2025

Course of study packet 2025

Courses group 2025

Course packet 2025

Course fields of education packet 2025

Special interest course packet 2025

Campuses group 2025

Campus packet 2025

HEP Staff data - Universities

Higher education staff **2025**

Select a year: 2025 ▼

All higher education providers ('providers') that are approved under the [Higher Education Support Act 2003](#) ¹² (HESA) are required to report data for the Higher Education Data Collection. This document sets out the reporting requirements

Full-time staff group 2025

Full-time staff packet 2025

Work classifications packet 2025

Casual staff actuals group 2024

Casual staff actuals packet 2024

Casual staff estimates group 2025

Casual staff estimates packet 2025

Change Control document

- Mandatory 2025 data submission timeframes
- Minor clarifications and updates to support the reporting requirement for staff data

HEP Staff data - NUHEP

- Guided by TEQSA PIR staff reporting requirements
- Expect web content update in Jan 2025

TCSI Renewal update – Introducing the Critical Loan Error Dashboard

VET

HEP

PIR



Introducing the *Critical Loan Errors Dashboard*

The *Critical Loan Errors Dashboard* serves as a cornerstone of the TCSI Renewal initiative, enhancing data quality and higher education loan monitoring. It is designed to assist providers in prioritising and resolving critical scheduled validation *loan* data errors that affect the transfer of student loans to the ATO. The dashboard also highlights 'seriously' late reported loans that may impact student well-being.

This presentation provides an overview of the dashboard's features.



Dashboard Overview

Interactive Data

Enables the identification, prioritisation, and resolution of critical scheduled validation (SV) **loan data errors** affecting **student loan transfers to the ATO** and highlights '**seriously**' late **reported loans** that may impact student well-being.

Real-time Insights

Provides **real-time updates** (nightly refresh) including **monthly snapshots** and **loan data error trends**, providing valuable insights for improvement efforts by stakeholders.

Personalised Views

Users can **customise their dashboard views** to focus on specific areas of interest or **error categories**.



Operational System - Loan Transfer Issues Dashboard

Seriously late reported loans

[Clear all slicers](#)

[Program Overview](#)

Data as of	11052/11053 Loan Count	11052/11053 Total Debt	11050 Enrolment/AOU Count	11050 Total Debt	Student Count	RTV Trigger Count
26/Nov/2024						

RTV Description

☐ Select all

☐ 11050 - Seriously late HECS-HELP or...

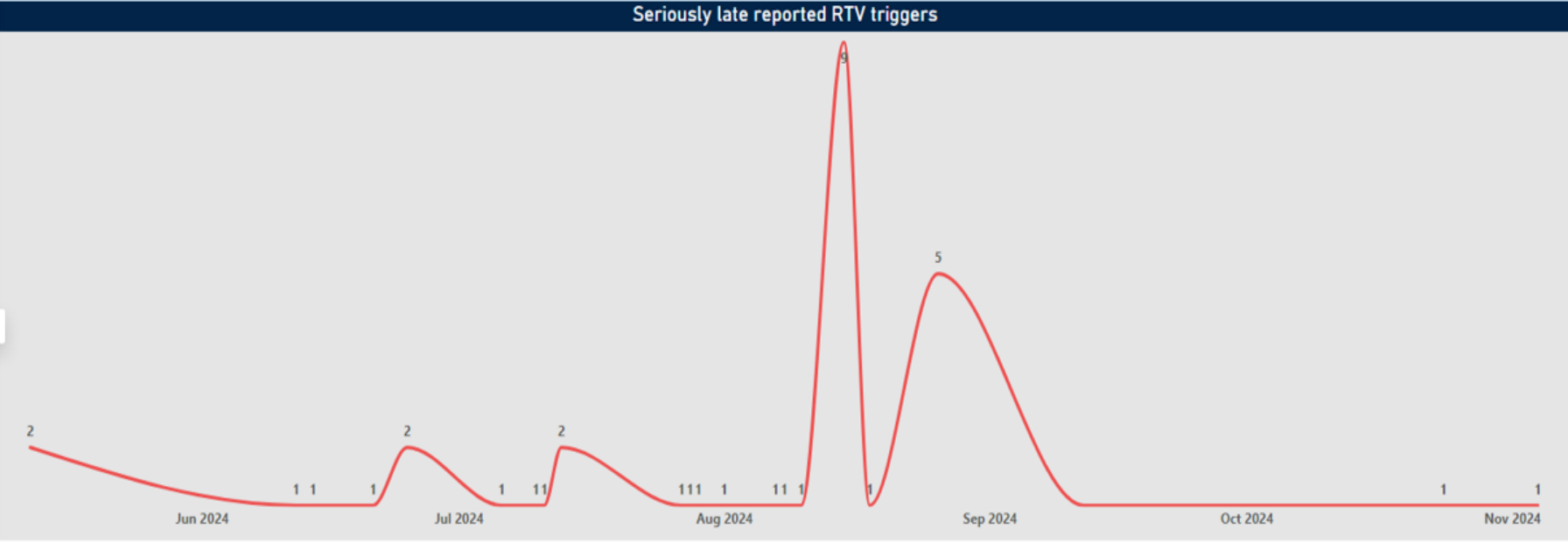
☐ 11052 - Seriously late SA-HELP loan ...

☐ 11053 - Seriously late OS-HELP loan ...

[Filter on](#) [Incurral Date](#)

RTV Event Date

01/05/2024 04/11/2024



Seriously Late Reported RTVs				
RTV	Operationid Count	Student Count	Loan Count	Total Debt Amount
11050 - Seriously late HECS-HELP or FEE-HELP loan has been reported				
11052 - Seriously late SA-HELP loan has been reported.				
11053 - Seriously late OS-HELP loan has been reported				
Total				

Click on Program Overview to return to the main page

Summary of late reported loans by different categories. Data Source – Application Insights

All of these categories have drill through to detailed information



Seriously Late Reported loans – same detailed drill through information

Operation_ID
Operation_name
message_id
event_timestamp_utc
UID21_StudentLoansResKey
UID16_UnitEnrolmentsResKey
E380_HELPType
E490_StudentStatusCode
E527_HELPDebtIncurralDate
E558_HELPLoanAmount
E662_AdjustedLoanAmount
E529_LoanFee
E663_AdjustedLoanFee
E381_AmountPaidUpfront
E384_AmountCharged
E528_OSHELPPaymentAmount
A130_LoanStatus
A163_HELPDebtIncurralDateUpdated
A115
UID19
UID8



Next Steps and Timeline



Queries

Self explanatory dashboard and easy to use. For additional assistance on dashboard:

TCSIRenewal@education.gov.au



Communication

Regular communication will be provided to users regarding updates and improvements to the dashboard.



Rollout (end November 2024)

The dashboard will be rolled out to providers via TCSI Analytics



Performance Monitoring

The dashboard's performance and effectiveness will be continuously monitored to ensure it meets user needs and objectives.

First address reporting

VET

HEP

PIR

Data reporting for FEE-FREE Uni Ready Courses

VET

HEP

PIR

Overview of the program: FEE-FREE Uni Ready Courses



In the 2024-25 Budget, The Government announced that it will provide \$350.3 million in additional Commonwealth Grant Scheme (CGS) funding over four years, commencing on 1 January 2025, to fully fund FEE-FREE Uni Ready (FFUR) courses to provide more students with an enabling pathway into higher education, with focus on students from underrepresented backgrounds.



The Australian Universities Accord (The Accord) review found that an important way of increasing enrolments, particularly from under-represented groups, is through enabling or ‘preparatory’ courses. Currently 25,000 students undertake preparatory courses each year. These courses prepare those with interrupted educational journeys to qualify for higher education entry without having to return to school.



Recommendation 12 of the Accord review recommended an increase in quality preparatory courses that are fee-free and funded at a level that reflects the full cost of delivery.

Key considerations for equity cohorts

Increasing Access

The evidence shows enabling courses result in higher success rates, grade point averages and retention rates than their non-enabling peers. In addition, enabling students feel empowered to overcome limiting beliefs about their academic and professional potential.

Articulation & preventing Attrition

Students from recognised equity groups who articulate via an enabling program have proven successful in providing pathways to university and have better first-year retention rates than most other sub-bachelor pathways (finding from study from National Centre for Student Equity in Higher Education at Curtin University)..

01



02

Tertiary Harmonisation

VET studies in terms of raw numbers transition the most equity-group students to Bachelor-level studies than other sub-bachelor pathways according to a study done by the National Centre for Student Equity in Higher Education at Curtin University looking into the efficacy of enabling and sub-bachelor pathways for disadvantaged students.

Portability

The portability of these courses will assist with students to have freedom to move particularly those from equity cohorts who may have limited options based on their location. As well as choosing from a range of providers who have different program options.

03

04

2025 Apps and Offers collection (University providers)

VET

HEP

PIR

2025 Apps and Offers collection

2025 Applications and Offers data submissions

- **February Preliminary collection through TCSI, 2025**
 - Reference date – Wednesday 29 January 2025
 - Submission date – by Wednesday 12 February 2025
- **May Final collection through TCSI, 2025**
 - Reference date – Wednesday 14 May 2025
 - Submission date – by Wednesday 28 May 2025

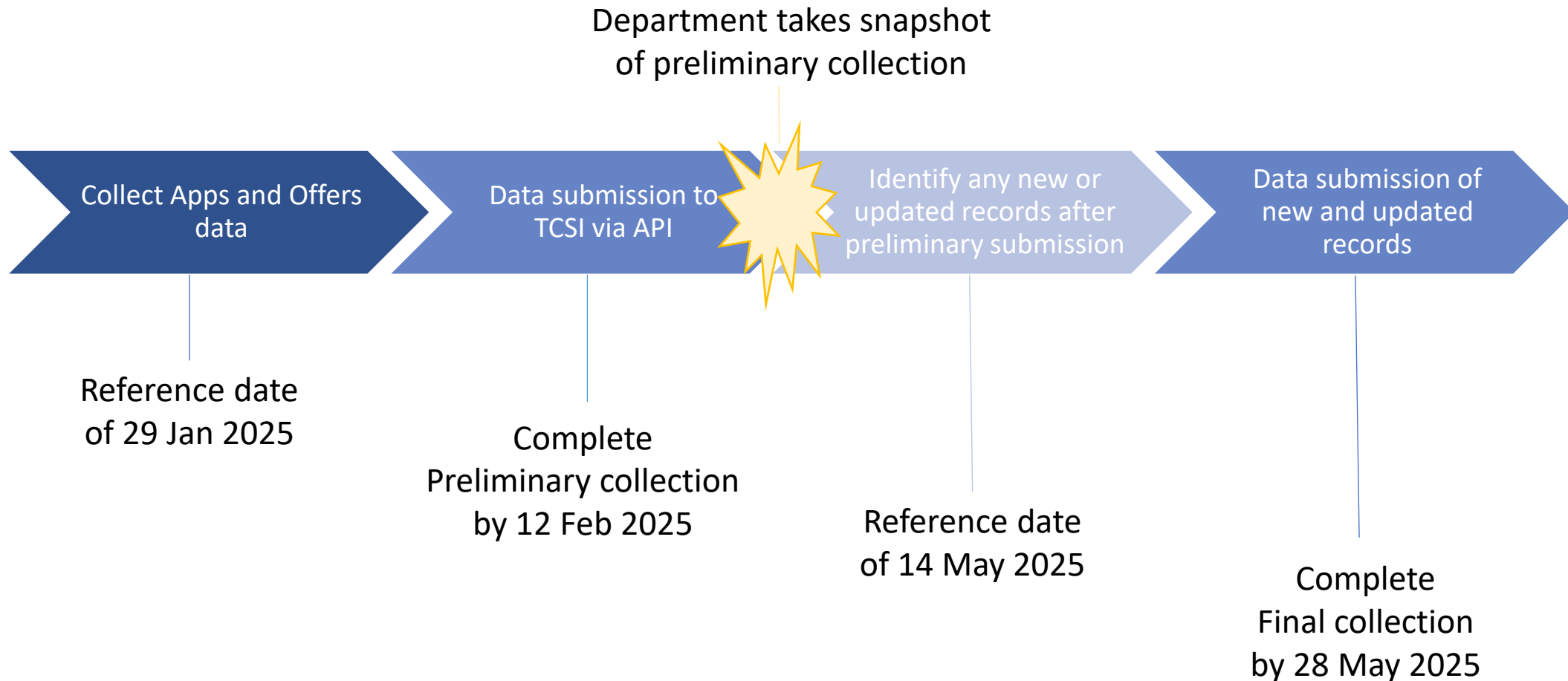
2025 Apps and Offers collection

How to submit University Apps and Offers data by reporting method

	API	TCSI Data Entry
February Preliminary collection	Submit data via API	Submit data via TCSI Data Entry file upload
May Final collection	Identify what has changed. Send the appropriate POST (new records) and PATCH (updating records) API calls.	Resubmit the same file template. The file upload in TCSI Data Entry is designed to detect differences between the TCSI database and your file and only process what has changed and what is new. Please avoid using preference ordinal position '00'

2025 Apps and Offers collection

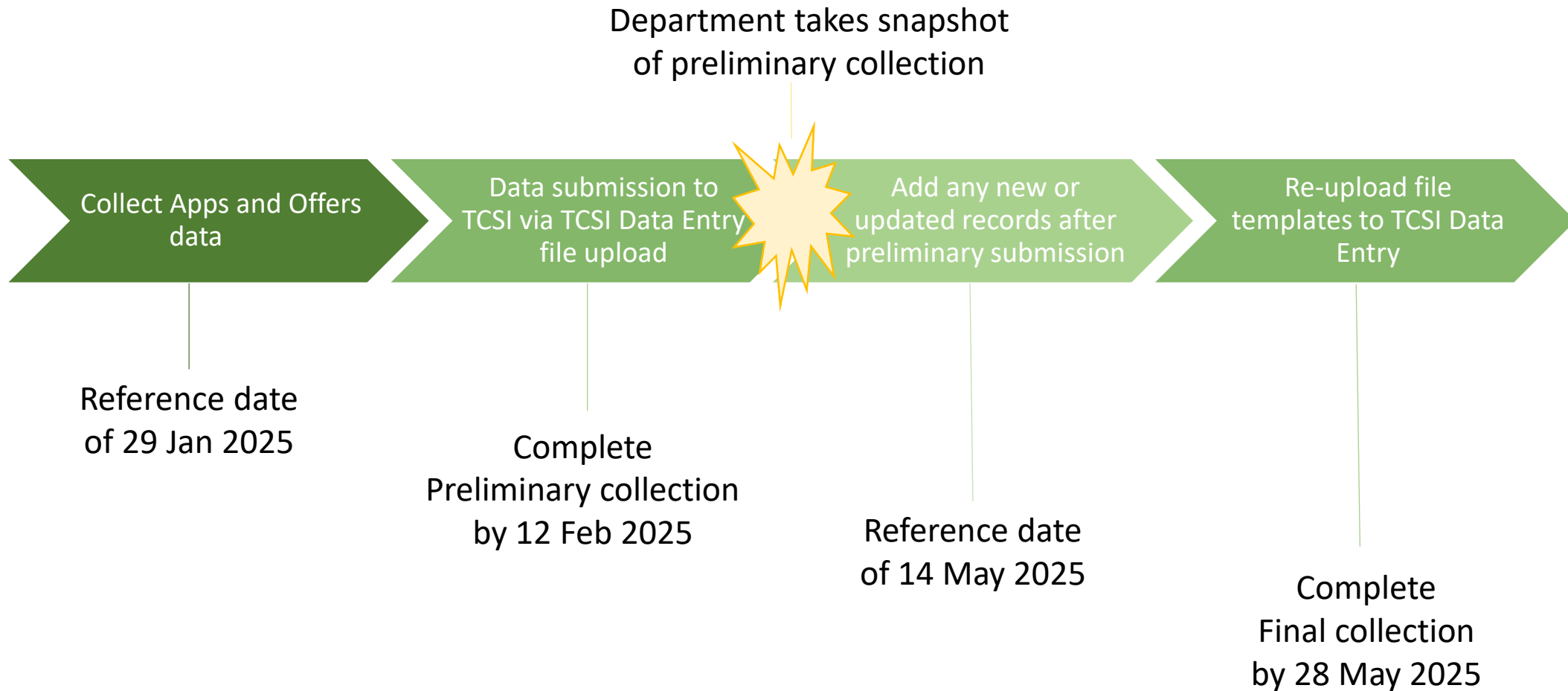
Pathway for API users



[Request a data extract](#) | [TCSI Support](#)

2025 Apps and Offers collection

Pathway for TCSI Data Entry users



[Request a data extract](#) | [TCSI Support](#)

2025 Apps and Offers collection

Changes to the Min Notice – E713: Preference ordinal position

[E713: Preference ordinal position element specifications](#) | [TCSI Support](#)

B2G API users

- Providers report '00' or a notional Preference ordinal position if applicants are not required to express a preference order.
- The Preference ordinal position (E713) must be different in each Course Preference linked to a single Application identification code (E700) for the Reporting year (E415) (unless 00 is reported).
- If only one preference is submitted against a unique value for Application identification code (E700) then the Preference ordinal position of '01' should be assigned.



TCSI Data Entry users

- Only one instance of a '00' notional Preference ordinal position can be reported for a unique combination of Application identification code (E700) for the Reporting year (E415).
- The Preference ordinal position (E713) must be different in each Course Preference linked to a single Application identification code (E700) for the Reporting year (E415).
- If only one preference is submitted against a unique value for Application identification code (E700) then the Preference ordinal position of '01' should be assigned.

2025 Apps and Offers collection

Context for changing E713: Preference ordinal position

Uniqueness

Each course preferences packet must have a unique combination of the values for:

- course application identifier (UID23 or combination of [E700: Application identification code](#)/[E415: Reporting Year](#))
- preference ordinal position ([E713: Preference ordinal position](#))*

*B2G API users may report multiple preference packets with preference ordinal position ([E713: Preference ordinal position](#)) with the same allowable value of '00' or '99'

- Uniqueness issue for reporting allowable value of '00' for E713
- TCSI Data Entry is designed with uniqueness criteria for preferences and offers packets
- TCSI Data Entry cannot identify unique records with '00' to update or remove
- Foreseen issue for preliminary reporting process, as TCSI Data Entry would create duplicate preferences or offers packet with '00' rather than updating a record for final collection
- **For TCSI Data Entry users, please use unique E713 allowable values** – e.g. '01', '02', '03' for each preferences/offers packet for a student for the reporting year
- API users may be able to target updates and removal of records in their SMS system

2025 Apps and Offers collection

Data element E723 Offer response code

Data element	Packet	Changes
E723: Offer response code	Course offers	<ul style="list-style-type: none">• optional for February (Prelim)• mandatory for May (final) submission

2025 Apps and Offers collection

Questions?

- Reporting requirements scope and timing questions

Applicationdata@education.gov.au

- Reporting methods and technical support

TCSIsupport@education.gov.au

Questions?

Contact us at:

TCSIsupport@education.gov.au

