



Australian Government  
Department of Education,  
Skills and Employment

# Your transition from HEPCAT to TCSI reporting



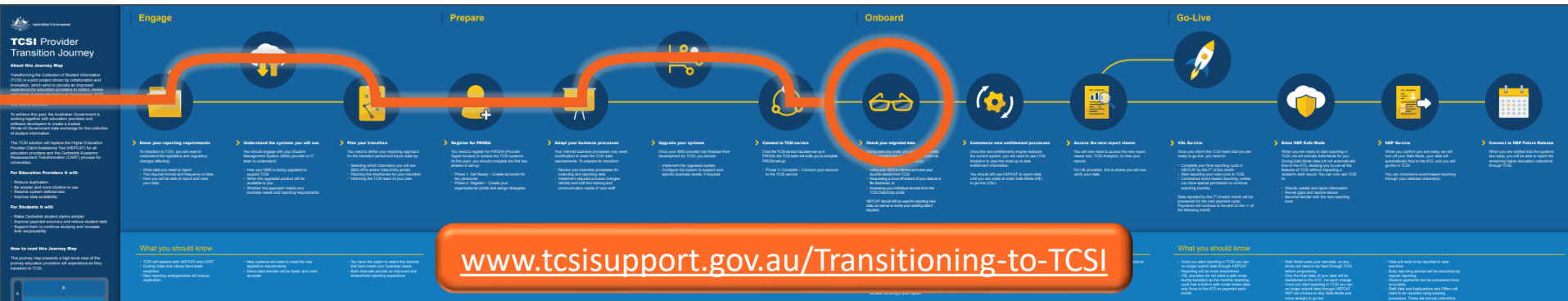
# Your transition has already begun!

- The [TCSI provider transition journey](#) includes the following steps that should be complete or close to complete:
  - Understanding your reporting requirements
  - Understand the systems you will use
  - Plan your transition (API vs TCSI Data Entry, timing of 2020 data and transition)
  - Adapt your business processes
  - Register for PRODA and assign roles
  - Upgrade your systems



# Your transition has already begun!

- Steps that you can undertake now include:
  - Checking your migrated data
  - Testing your TCSI solution



# TCSI Early adopters

we will contact providers adopting in December and January in the coming weeks



- Complete urgent 2020 reporting in HEPCAT (e.g. remissions, student concordances)
- **Go live in TCSI (VSL) or TCSI safemode (HE)** on your nominated day
- Start small and work towards getting 2020 data ready for your transition date
  - VSL before 7 January or later (depends on census dates)
  - HE before 31 January (2020 records)
- We will ask HE providers when they will be ready to turn off safemode (last date 31 March)

# VET Student Loans Go-live

Providers will be contacted a month out from planned transition



- Complete HEPCAT reporting on the 7<sup>th</sup>
- HEPCAT access switched off on the 8<sup>th</sup>
- Verify migrated data 9<sup>th</sup> – 10<sup>th</sup>
- **Go live in TCSI** on the 11<sup>th</sup> – 12<sup>th</sup>
- Start small and work towards having data ready before the following 7<sup>th</sup>

# Higher education with safe mode

Providers will be contacted a month out from planned transition



- Complete 2020 HEPCAT reporting ASAP
- HEPCAT access switched off before entering TCSI
- Go live in **TCSI safemode** on your nominated day
- Start small and work towards getting all data ready for your transition date
- We will ask if you are ready to turn off safemode
- Safemode will be turned off after 31 March unless your organisation has submitted a written request



Australian Government  
Department of Education,  
Skills and Employment

# TCSI Support questions

TCSI Project Team – [TCSIsupport@dese.gov.au](mailto:TCSIsupport@dese.gov.au)